

# 316 Stainless Steel Up/Down Wall Pillar Lights



## PRODUCT DETAILS

**Name:** Tivah

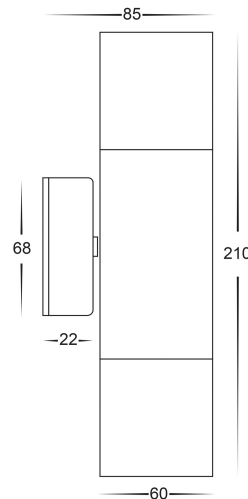
**Material:** 316 Stainless Steel

**Colour:** Stainless Steel

**IP Rating:** IP65

**Lamp Base:** GU10 or MR16

**Warranty:** 2 years replacement\*\*



PART NUMBER	COLOUR TEMP	LUMENS*	INPUT VOLTAGE	BEAM ANGLE	INCLUDED GLOBES
HV1005C	6000K	2 x 500lm	240v	60°	2 x 10w GU10 LED
HV1005W	3000K	2 x 460lm	240v	60°	2 x 10w GU10 LED
HV1006			240v		
HV1007GU10C	6000K	2 x 300lm	240v	120°	2 x 5w GU10 LED
HV1007GU10W	3000K	2 x 250lm	240v	120°	2 x 5w GU10 LED
HV1007MR16C	6000K	2 x 300lm	12v DC	120°	2 x 5w MR16 LED
HV1007MR16W	3000K	2 x 250lm	12v DC	120°	2 x 5w MR16 LED

12v DC models must be used with suitable 12v DC LED Driver

\* Lumen output measured at source

\*\* See Warranty Terms and Conditions for more information

For more information contact Havit Lighting

ADDRESS:  
143 Beauchamp Road  
Matraville NSW 2036  
Australia

Tel: 02 9381 8300  
Fax: 02 9666 8881  
Email: [sales@havit.com.au](mailto:sales@havit.com.au)  
web: [www.havit.com.au](http://www.havit.com.au)

# Solid Copper Up/Down Wall Pillar Lights



## PRODUCT DETAILS

**Name:** Tivah

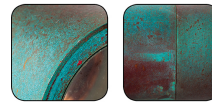
**Material:** Solid Copper

**Colour:** Copper (will age over time)

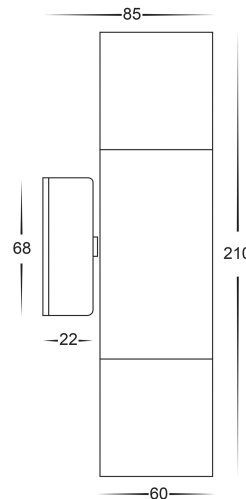
**IP Rating:** IP65

**Lamp Base:** GU10 or MR16

**Warranty:** 2 years replacement\*\*



Weathered Copper



PART NUMBER	COLOUR TEMP	LUMENS*	INPUT VOLTAGE	BEAM ANGLE	INCLUDED GLOBES
HV1015C	6000K	2 x 500lm	240v	60°	2 x 10w GU10 LED
HV1015W	3000K	2 x 460lm	240v	60°	2 x 10w GU10 LED
HV1016			240v		
HV1017GU10C	6000K	2 x 300lm	240v	120°	2 x 5w GU10 LED
HV1017GU10W	3000K	2 x 250lm	240v	120°	2 x 5w GU10 LED
HV1017MR16C	6000K	2 x 300lm	12v DC	120°	2 x 5w MR16 LED
HV1017MR16W	3000K	2 x 250lm	12v DC	120°	2 x 5w MR16 LED

12v DC models must be used with suitable 12v DC LED Driver

\* Lumen output measured at source

\*\* See Warranty Terms and Conditions for more information

For more information contact Havit Lighting

ADDRESS:  
143 Beauchamp Road  
Matraville NSW 2036  
Australia

Tel: 02 9381 8300  
Fax: 02 9666 8881  
Email: [sales@havit.com.au](mailto:sales@havit.com.au)  
web: [www.havit.com.au](http://www.havit.com.au)

# Matt Black

## Up/Down Wall Pillar Lights



### PRODUCT DETAILS

**Name:** Tivah

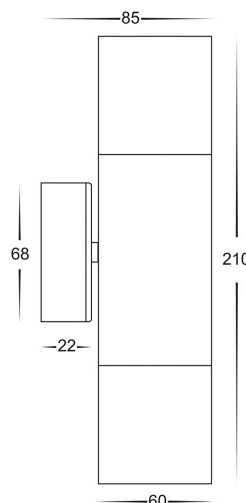
**Material:** Aluminium

**Colour:** Matt Black

**IP Rating:** IP65

**Lamp Base:** GU10 or MR16

**Warranty:** 2 years replacement\*\*



PART NUMBER	COLOUR TEMP	LUMENS*	INPUT VOLTAGE	BEAM ANGLE	INCLUDED GLOBES
HV1025C	6000K	2 x 500lm	240v	60°	2 x 10w GU10 LED
HV1025W	3000K	2 x 460lm	240v	60°	2 x 10w GU10 LED
HV1026			240v		
HV1027GU10C	6000K	2 x 300lm	240v	120°	2 x 5w GU10 LED
HV1027GU10W	3000K	2 x 250lm	240v	120°	2 x 5w GU10 LED
HV1027MR16C	6000K	2 x 300lm	12v DC	120°	2 x 5w MR16 LED
HV1027MR16W	3000K	2 x 250lm	12v DC	120°	2 x 5w MR16 LED

12v DC models must be used with suitable 12v DC LED Driver

\* Lumen output measured at source

\*\* See Warranty Terms and Conditions for more information

For more information contact Havit Lighting

ADDRESS:  
143 Beauchamp Road  
Matraville NSW 2036  
Australia

Tel: 02 9381 8300  
Fax: 02 9666 8881  
Email: [sales@hav.it.com.au](mailto:sales@hav.it.com.au)  
web: [www.havit.com.au](http://www.havit.com.au)

Matt White

Up/Down Wall Pillar Lights



## PRODUCT DETAILS

**Name:** Tivah

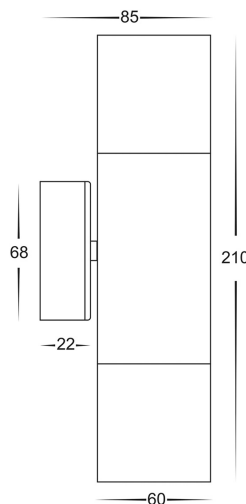
**Material:** Aluminium

**Colour:** Matt White

**IP Rating:** IP65

**Lamp Base:** GU10 or MR16

**Warranty:** 2 years replacement\*\*



PART NUMBER	COLOUR TEMP	LUMENS*	INPUT VOLTAGE	BEAM ANGLE	INCLUDED GLOBES
HV1035C	6000K	2 x 500lm	240v	60°	2 x 10w GU10 LED
HV1035W	3000K	2 x 460lm	240v	60°	2 x 10w GU10 LED
HV1036			240v		
HV1037GU10C	6000K	2 x 300lm	240v	120°	2 x 5w GU10 LED
HV1037GU10W	3000K	2 x 250lm	240v	120°	2 x 5w GU10 LED
HV1037MR16C	6000K	2 x 300lm	12v DC	120°	2 x 5w MR16 LED
HV1037MR16W	3000K	2 x 250lm	12v DC	120°	2 x 5w MR16 LED

12v DC models must be used with suitable 12v DC LED Driver

\* Lumen output measured at source

\*\* See Warranty Terms and Conditions for more information

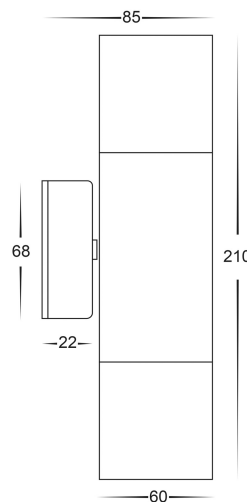
For more information contact Havit Lighting

ADDRESS:  
143 Beauchamp Road  
Matraville NSW 2036  
Australia

Tel: 02 9381 8300  
Fax: 02 9666 8881  
Email: sales@havit.com.au  
web: www.havit.com.au

## Matt Silver

## Up/Down Wall Pillar Lights

**PRODUCT DETAILS****Name:** Tivah**Material:** Aluminium**Colour:** Matt Silver**IP Rating:** IP65**Lamp Base:** GU10 or MR16**Warranty:** 2 years replacement\*\*

PART NUMBER	COLOUR TEMP	LUMENS*	INPUT VOLTAGE	BEAM ANGLE	INCLUDED GLOBES
HV1045C	6000K	2 x 500lm	240v	60°	2 x 10w GU10 LED
HV1045W	3000K	2 x 460lm	240v	60°	2 x 10w GU10 LED
HV1046			240v		
HV1047GU10C	6000K	2 x 300lm	240v	120°	2 x 5w GU10 LED
HV1047GU10W	3000K	2 x 250lm	240v	120°	2 x 5w GU10 LED
HV1047MR16C	6000K	2 x 300lm	12v DC	120°	2 x 5w MR16 LED
HV1047MR16W	3000K	2 x 250lm	12v DC	120°	2 x 5w MR16 LED

12v DC models must be used with suitable 12v DC LED Driver

\* Lumen output measured at source

\*\* See Warranty Terms and Conditions for more information

For more information contact Havit Lighting

ADDRESS:  
143 Beauchamp Road  
Matraville NSW 2036  
Australia

Tel: 02 9381 8300  
Fax: 02 9666 8881  
Email: sales@havit.com.au  
web: www.havit.com.au

# Silver Aluminium Up/down Wall Pillar Lights



## PRODUCT DETAILS

**Name:** Tivah

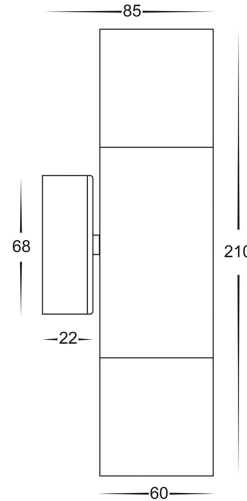
**Material:** Coloured Aluminium

**Colour:** Silver

**IP Rating:** IP65

**Lamp Base:** GU10 or MR16

**Warranty:** 2 years replacement\*\*



PART NUMBER	COLOUR TEMP	LUMENS*	INPUT VOLTAGE	BEAM ANGLE	INCLUDED GLOBES
HV1065C	6000K	2 x 500lm	240v	60°	2 x 10w GU10 LED
HV1065W	3000K	2 x 460lm	240v	60°	2 x 10w GU10 LED
HV1066			240v		
HV1067GU10C	6000K	2 x 300lm	240v	120°	2 x 5w GU10 LED
HV1067GU10W	3000K	2 x 250lm	240v	120°	2 x 5w GU10 LED
HV1067MR16C	6000K	2 x 300lm	12v DC	120°	2 x 5w MR16 LED
HV1067MR16W	3000K	2 x 250lm	12v DC	120°	2 x 5w MR16 LED

12v DC models must be used with suitable 12v DC LED Driver

\* Lumen output measured at source

\*\* See Warranty Terms and Conditions for more information

For more information contact Havit Lighting

ADDRESS:  
143 Beauchamp Road  
Matraville NSW 2036  
Australia

Tel: 02 9381 8300  
Fax: 02 9666 8881  
Email: [sales@havit.com.au](mailto:sales@havit.com.au)  
web: [www.havit.com.au](http://www.havit.com.au)



## PRODUCT SPECIFICATIONS

# Stainless Steel LED Up/Down Wall Pillar Light



Lighting by Havit

### ORDER CODES:

- **HV1071C** (Cool White, 6000k)
- **HV1071W** (Warm White, 3000k)

### PRODUCT SPECIFICATIONS:

**Input Voltage:** 240v AC

**Power:** 10w (2x5w)

**Material:** Stainless Steel

**Colour:** Stainless Steel

**IP Rating:** IP54

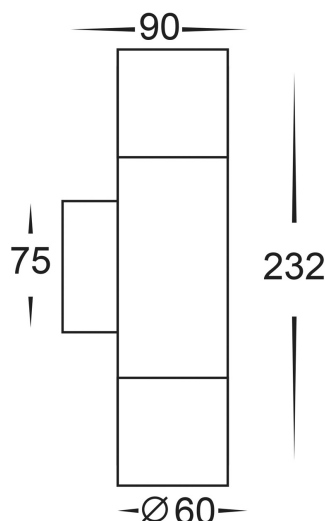
**Lumens:** Cool White 6000k, 2 x 300lm\*  
Warm White 3000k 2 x 250lm\*

**Globe Beam Angle:** 120 degrees

**Lamp Base:** GU10

**Warranty:** 2 Years Replacement

(see Terms and Conditions for more information.)



\* Base width 46mm



*For more information contact Havit Lighting*

\*Lumen output measured at source.

**ADDRESS:**

143 Beauchamp Road  
Matraville NSW 2036  
Australia

Tel: 02 9381 8300  
Fax: 02 9666 8881  
Email: [sales@havit.com.au](mailto:sales@havit.com.au)  
web: [www.havit.com.au](http://www.havit.com.au)

## PRODUCT SPECIFICATIONS

# Stainless Steel LED Up/Down Wall Pillar Light



Lighting by Havit

### ORDER CODES:

- **HV1072C** (Cool White, 6000k)
- **HV1072W** (Warm White, 3000k)

### PRODUCT SPECIFICATIONS:

**Input Voltage:** 240v AC

**Power:** 10w (2x5w)

**Material:** Stainless Steel

**Colour:** Stainless Steel

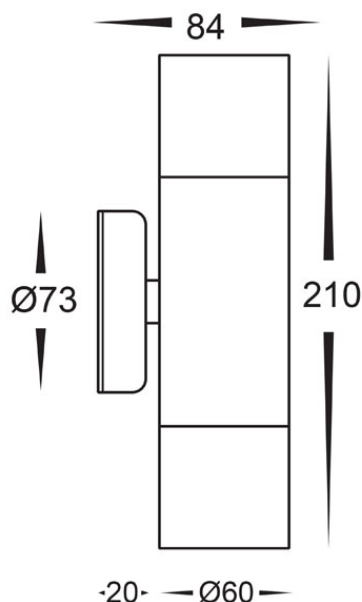
**IP Rating:** IP54

**Lumens:** Cool White 6000k, 2 x 300lm  
Warm White 3000k, 2 x 250lm

**Globe Beam Angle:** 120 degrees

**Lamp Base:** GU10

**Warranty:** 2 Years Replacement



*For more information contact Havit Lighting*

**ADDRESS:**

143 Beauchamp Road  
Matraville NSW 2036  
Australia

Tel: 02 9381 8300

Fax: 02 9666 8881

Email: [sales@havit.com.au](mailto:sales@havit.com.au)

web: [www.havit.com.au](http://www.havit.com.au)



# Titanium Aluminium Up/Down Wall Pillar Lights



## PRODUCT DETAILS

**Name:** Tivah

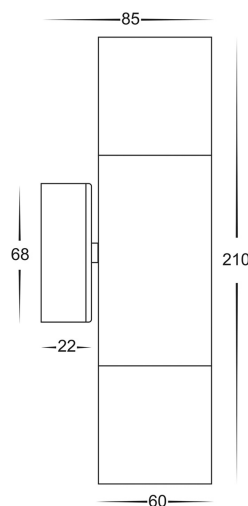
**Material:** Coloured Aluminium

**Colour:** Titanium

**IP Rating:** IP65

**Lamp Base:** GU10 or MR16

**Warranty:** 2 years replacement\*\*



PART NUMBER	COLOUR TEMP	LUMENS*	INPUT VOLTAGE	BEAM ANGLE	INCLUDED GLOBES
HV1085C	6000K	2 x 500lm	240v	60°	2 x 10w GU10 LED
HV1085W	3000K	2 x 460lm	240v	60°	2 x 10w GU10 LED
HV1086			240v		
HV1087GU10C	6000K	2 x 300lm	240v	120°	2 x 5w GU10 LED
HV1087GU10W	3000K	2 x 250lm	240v	120°	2 x 5w GU10 LED
HV1087MR16C	6000K	2 x 300lm	12v DC	120°	2 x 5w MR16 LED
HV1087MR16W	3000K	2 x 250lm	12v DC	120°	2 x 5w MR16 LED

12v DC models must be used with suitable 12v DC LED Driver

\* Lumen output measured at source

\*\* See Warranty Terms and Conditions for more information

For more information contact Havit Lighting

ADDRESS:  
143 Beauchamp Road  
Matraville NSW 2036  
Australia

Tel: 02 9381 8300  
Fax: 02 9666 8881  
Email: [sales@havit.com.au](mailto:sales@havit.com.au)  
web: [www.havit.com.au](http://www.havit.com.au)