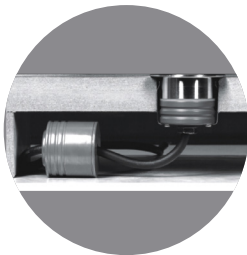




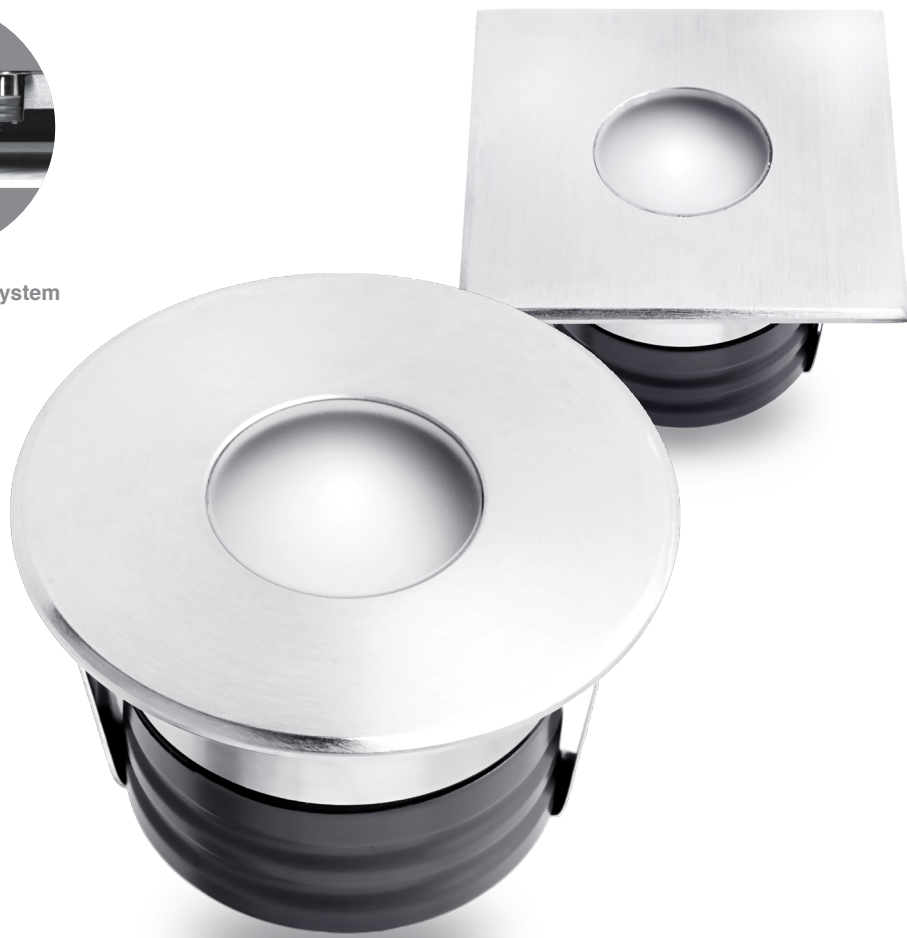
INGROUND UPLIGHT

2W LED Exterior 12Vdc square and round face inground uplighter

AT9314 AND AT9315



Uplight mounting system



Features

- Exterior decorative lighting for driveways, paths and gardens
- Supplied with additional inground canister
- Round or square surface



Colour options

Cool white, warm white and blue



Finish

Stainless steel marine grade 316L



IP Rating

IP67



Warranty

Three years

Product datasheet

Description

2W LED IP67 12Vdc square face inground uplighter.
2W LED IP67 12Vdc round face inground uplighter.

Finish



Stainless Steel 316L

Product specification

Voltage	12Vdc		
Power consumption	2W		
Light colour options	Warm white	Cool white	Blue
Lumen output	68lm	68lm	-
Colour	3000K	4000K	-
Beam angle	30°		
Dimmable	No		
Warranty	3 Years		
Working temperature	-20°C – 40 °C		
IP Rating	IP67		
IK Rating	IK06		
Electrical classification	Class III		

Product range

Code	Type	Colour
AT9314/WW	Square face	Warm white
AT9314/CW	Square face	Cool white
AT9314/BLU	Square face	Blue
AT9315/WW	Round face	Warm white
AT9315/CW	Round face	Cool white
AT9315/BLU	Round face	Blue

Compatible drivers*

Code	Description
AT-28000507	12VDC - 15W IP67 LED Driver
AT-28000508	12VDC - 35W IP67 LED Driver
AT-28000509	12VDC - 60W IP67 LED Driver
AT-28000510	12VDC - 100W IP67 LED Driver

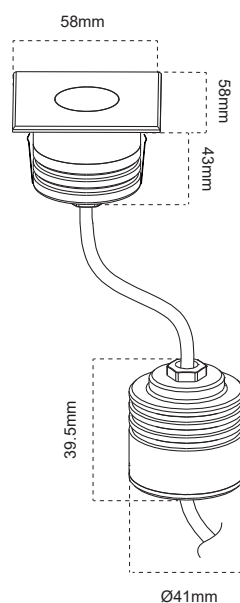
* Must use DC drivers. Sold separately.

Dimensions

AT9314	Width	Height	Cut out
Inground uplighter	58mm	43mm	Ø48mm
Inground canister	Ø48mm	132.5mm	86mm

AT9315	Width	Height	Cut out
Inground uplighter	Ø58mm	43mm	Ø48mm
Inground canister	Ø48mm	132.5mm	86mm

AT9314



AT9315

